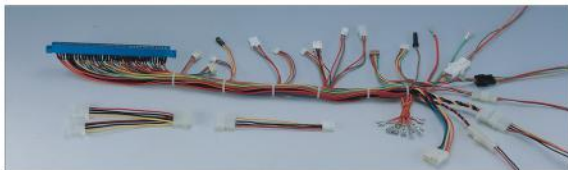
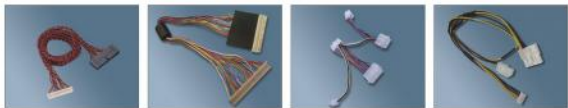




杉洋企業有限公司  
SUNNY YOUNG ENTERPRISE CO., LTD.  
[www.sunnyyoung.com.tw](http://www.sunnyyoung.com.tw)

# CONNECTORS WIRE HARNESSES CABLE ASSEMBLIES





CRIMP TERMINAL HOUSING &amp; WIRE HARNESES



**U011-U011-0100**  
USB AM/AM



**U011-U012-0100**  
USB AM/AF



**U011-U012-0200**  
USB AM/AF



**U011-U021-0100**  
USB 3.0 AM/AM



**U011-U021-0200**  
USB AM/AM



**U011-U021-0300**  
USB AM/AM



**U011-U021-0400**  
USB AM/AM



**U011-U041-0100**  
USB AM/Mini AM



**U011-U051-0100**  
USB AM/Mini AM



**U011-U061-0100**  
USB AM/Micro BSM



**U012-U012-0100**  
USB AF/AF



**U012-C102-0100**  
USB AF/2533



**I041-I041-0100**  
IEEE1394 4M/4M



**I061-I062-0100**  
IEEE1394 8M/8F



**V681-B501-0100**  
VHDCI 68M/HPOB 50M



**V681-N501-0100**  
VHDCI 68M/CN 50M



**B251-N501-0100**  
SCSI-D25 25M / CN 50M



**B501-N251-0100**  
SCSI-HPDB 50M / DB 25M



**B501-N501-0100**  
SCSI-HPDB 50M / CN 58M



**N501-N502-0100**  
SCSI-CN 58M / CN 50F



**M201-H151-0100**  
MINI DP 20M / HD D-SUB 15M



**M201-H191-0100**  
MINI DP 20M / HDMI 15M



**M201-H251-0100**  
MINI DP 20M / DVI 25M



**M201-P201-0100**  
MINI DP 20M / DP 20M



**P201-D251-0100**  
DP 20M / DVI 25M



**P201-H151-0100**  
DP 20M / HD D-SUB 15M



**P201-H191-0100**  
DP 20M / HDMI 15M



**H191-D191-0100**  
HDMI 19M / DVI 15M



**H191-H191-0100**  
HDMI 19M / 19M-A



**H191-H191-0200**  
HDMI(C) 19M / HDMI(C) 19M



**H191-H191-0300**  
HDMI 19M / HDMI(C) 19M



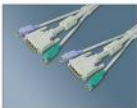
**H191-H191-0400**  
HDMI 19M / 19M



**D191-D191-0100**  
DVI 19M/19M



**D291-D292-0100**  
DVI 25M/DVI 23F



**D291-G061-0100**  
DVI 29M/MD 6M



**D292-C601-0100**  
DVI 29F/MOLEX 60M



**R012-K351-0100**  
RCA F/DC 3.5P



**R021-R021-0100**  
RCA M/M



**R041-G051-0100**  
RCA M/DSM



**R051-R051-0100**  
RCA M/M



**H151-R051-0100**  
HD D-SUB 15M/RCA M



**J021-J022-0100**  
BNC M/F



**T071-T071-0100**  
SATA-II 7M/7M-S



**T071-T071-0200**  
SATA 7M(90°)/SATA 7M



**T071-T072-0100**  
SATA 7M/7F



**T071-T072-0200**  
SATA 7M/7F+DB 15F/IDC 16P



**T151-C042-0100**  
SATA 15M/2500-04F



**T221-C042-0100**  
SATA(7+15M)/2500-04F+SATA 7M



**B092-C102-0100**  
DB 9F/2530



**B152-H151-0100**  
DB 15F/HD D-SUB 15M



**H151-J082-0100**  
HD D-SUB 15M/BNC F



**H152-U012-0100**  
HD D-SUB 15F/USB AF/BF/8P6C



**L082-L082-0100**  
CAT.5e UTP



**L082-L082-0200**  
CAT.5e UTP



**L082-L082-0300**  
CAT.5e UTP



**L082-L082-0400**  
CAT.5e UTP



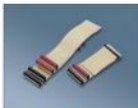
**L082-L082-0500**  
CAT.6 UTP



**L082-L082-0600**  
T-MOD ADAPTER



**I282-I102-0100**  
IDC 28PIN/15PIN



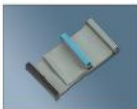
**I402-I402-0100**  
ULTRA ATA66/100



**I102-I102-0100**  
IDC 10PIN



**I342-I342-0100**  
IDC 34PIN



**I402-I402-0100**  
IDC 40PIN



**I402-I402-0200**  
IDC 40PIN



2.54mm(100")

**1100 SERIES**  
 SINGLE ROW HEADER  
**2200 SERIES**  
 DUAL ROW HEADER


2.54mm(100")

**1105 SMT SERIES**  
 SINGLE ROW HEADER SMT TYPE  
**2205 SMT SERIES**  
 DUAL ROW HEADER SMT TYPE


2.54mm(100")

**2300 SERIES**  
 DUAL ROW HEADER


2.50mm(98")

**2400 SERIES** HOUSING  
**2401 SERIES** WAFER  
**2403 SERIES** TERMINAL


2.54mm(100")

**2430 SERIES** HOUSING  
**2431 SERIES** WAFER  
**2433 SERIES** TERMINAL


2.54mm(100")

**2510 SERIES** HOUSING  
**2511 SERIES** WAFER  
**2513 SERIES** TERMINAL


2.54mm(100")

**2510 SERIES**  
 CENTR MASS TERMINATED CONNECTOR


2.50mm(98")

**2520 SERIES** HOUSING  
**2521 SERIES** WAFER  
**2523 SERIES** TERMINAL


2.54mm(100")

**2530 SERIES** HOUSING  
**2533 SERIES** TERMINAL


2.50mm(98")

**2540 SERIES** HOUSING  
**2541 SERIES** HEADER  
**2643 SERIES** TERMINAL


2.50mm(98")

**2550 SERIES** HOUSING  
**2553 SERIES** TERMINAL


2.50mm(98")

**2560 SERIES** HOUSING  
**2561 SERIES** WAFER  
**2563 SERIES** TERMINAL


2.50mm(98")

**2570 SERIES** HOUSING  
**2571 SERIES** WAFER  
**2573 SERIES** TERMINAL


2.50mm(98")

**2580 SERIES** HOUSING  
**2581 SERIES** WAFER  
**2583 SERIES** TERMINAL


2.50mm(98")

**2590 SERIES** HOUSING  
**2591 SERIES** WAFER  
**2593 SERIES** TERMINAL


5.08mm(200")

**2600 SERIES**  
 POWER HOUSING  
**2603 SERIES**  
 TERMINAL



1.30mm (.051")  
**2610 SERIES**  
 WIRE TO WIRE HOUSING  
**2613 SERIES**  
 TERMINAL



1.58mm (.062")  
**2620 SERIES**  
 WIRE TO WIRE HOUSING  
**2623 SERIES**  
 TERMINAL



2.00mm (.079")  
**2630 SERIES**  
 WIRE TO WIRE HOUSING  
**2633 SERIES**  
 TERMINAL



2.50mm (.099")  
**2640 SERIES**  
 WIRE TO WIRE HOUSING  
**2643 SERIES**  
 TERMINAL



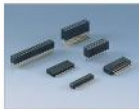
2.35mm (.093")  
**2650 SERIES**  
 WIRE TO WIRE HOUSING  
**2653 SERIES**  
 TERMINAL



4.20mm (.165")  
**2660 SERIES**  
 WIRE TO WIRE HOUSING  
**2661 SERIES** WAFER  
**2663 SERIES** TERMINAL



2.54mm (.100")  
**2700 SERIES**  
 MINI JUMPER



2.54mm (.100")  
**2800 SERIES**  
 P.C.B. MOUNTING  
**2800 SMT SERIES**  
 P.C.B. MOUNTING SMT TYPE



2.54mm (.100")  
**2810 SERIES**  
 P.C. BOARD CONNECTOR



3.96mm (.156")  
**2820 SERIES**  
 P.C. BOARD CONNECTOR



**2900 SERIES**  
 DIN JACK  
**2910 SERIES**  
 MINI DIN JACK  
 DUAL MINI DIN JACK



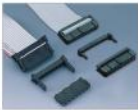
2.54mm (.100")  
**3000 SERIES**  
 DUAL POW HEADER  
 WITH LATCH EJECT



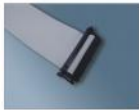
2.54mm (.100")  
**3010 SERIES**  
 BOX HEADER NO EJECT



2.54mm (.100")  
**3100 SERIES** DIP PLUG (.100"x.100")  
**3110 SERIES** DIP PLUG (.100"x.300")  
**3120 SERIES** DIP PLUG (.100"x.600")



2.54mm (.100")  
**3130 SERIES**  
 I.D.C. SOCKET SINGLE ROW  
**3131 SERIES**  
 I.D.C. SOCKET WITH STRAIN RELIEF



2.54mm (.100")  
**3132 SERIES**  
 I.D.C. SOCKET





2.54mm, 100°  
**3140 SERIES**  
 CARD EDGE  
**3141 SERIES**  
 CARD EDGE WITH STRAIN RELIEF



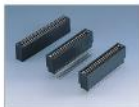
2.54mm, 100°  
**3150 SERIES**  
 I.D.C. BOX HEADER NO EJECT  
**3151 SERIES**  
 I.D.C. BOX HEADER NO EJECT WITH STRAIN RELIEF



2.54mm, 100°  
**3160 SERIES**  
 I.D.C. DUAL ROW HEADER WITH LATCH EJECT  
**3161 SERIES**  
 I.D.C. DUAL ROW HEADER WITH LATCH EJECT WITH STRAIN RELIEF



2.54mm, 100°  
**3200 SERIES**  
 PFC/PFC CONNECTOR



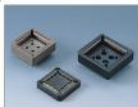
2.54mm, 100°  
**3310 SERIES**  
 CARD EDGE SLOT



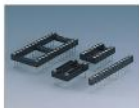
3.96mm, 150°  
**3230 SERIES**  
 CARD EDGE SLOT SOLDER TYPE  
**3231 SERIES**  
 CARD EDGE SLOT P.C.B. TYPE



2.54mm, 100°  
**3300 SERIES**  
 IC SOCKET (100x300°)  
**3301 SERIES**  
 IC SOCKET (100x800°)



**3302 SERIES**  
 P.L.C.C. SOCKET P.C.B. TYPE  
 P.L.C.C. SOCKET SMT TYPE



2.54mm, 100°  
**3310 SERIES**  
 ROUND P.M.I.C. SOCKET  
**3312 SERIES**  
 ROUND PIN SP SOCKET  
**3313 SERIES**  
 OSCILLATOR SOCKET



1.78mm, 120°  
**3320 SERIES**  
 IC SOCKET (170x400°)  
**3321 SERIES**  
 IC SOCKET (170x600°)  
**3322 SERIES**  
 IC SOCKET (170x750°)



7.50mm-5.00mm, 295°-197°  
**3430 SERIES** HOUSING  
**3431 SERIES** HEADER  
**3433 SERIES** TERMINAL



10.00mm-8.00mm, 394°-315°  
**3440 SERIES** HOUSING  
**3441 SERIES** HEADER  
**3443 SERIES** TERMINAL



7.50mm-5.00mm, 295°-197°  
**3450 SERIES** HOUSING  
**3451 SERIES** WAFER  
**3452 SERIES** HEADER  
**3903 SERIES** TERMINAL



5.08mm, 200°  
**3510 SERIES** HOUSING  
**3511 SERIES** WAFER  
**3512 SERIES** HEADER  
**3903 SERIES** TERMINAL



5.08mm, 200°  
**3600 SERIES**  
 I.D.C. POWER HOUSING  
**3601 SERIES**  
 POWER PLUG



3.96mm, 150°  
**3900 SERIES** HOUSING  
**3901 SERIES** WAFER  
**3902 SERIES** HEADER  
**3903 SERIES** TERMINAL



3.96mm (156")  
**3910 SERIES** HOUSING  
**3911 SERIES** WAFER  
**3903 SERIES** TERMINAL



3.96mm (156")  
**3920 SERIES** HOUSING  
**3921 SERIES** WAFER  
**3923 SERIES** TERMINAL



3.96mm (156")  
**3940 SERIES** HOUSING  
**3901 SERIES** WAFER  
**3902 SERIES** HEADER  
**3943 SERIES** TERMINAL



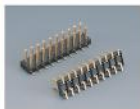
3.50mm (138")  
**3970 SERIES** HOUSING  
**3971 SERIES** WAFER  
**3973 SERIES** TERMINAL



4.00mm (157")  
**4000 SERIES** HOUSING  
**4001 SERIES** WAFER  
**4003 SERIES** TERMINAL



2.00mm (079")  
**5100 SERIES**  
 SINGLE ROW HEADER  
**5200 SERIES**  
 DUAL ROW HEADER



2.00mm (079")  
**5105 SMT SERIES**  
 SINGLE ROW HEADER SMT TYPE  
**5205 SMT SERIES**  
 DUAL ROW HEADER SMT TYPE



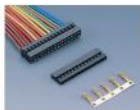
2.00mm (079")  
**5300 SERIES**  
 DUAL ROW HEADER



2.00mm (079")  
**5500 SERIES** HOUSING  
**5501 SERIES** WAFER  
**5503 SERIES** TERMINAL



2.00mm (079")  
**5500 SERIES** DUAL ROW HOUSING  
**5501 SERIES** DUAL ROW WAFER  
**5503 SERIES** TERMINAL



2.00mm (079")  
**5510 SERIES** HOUSING  
**5513 SERIES** TERMINAL



2.00mm (079")  
**5520 SERIES** HOUSING  
**5521 SERIES** WAFER  
**5523 SERIES** TERMINAL



2.00mm (079")  
**5540 SERIES** HOUSING  
**5541 SERIES** WAFER  
**5543 SERIES** TERMINAL



2.00mm (079")  
**5550 SERIES** HOUSING  
**5553 SERIES** TERMINAL



2.00mm (079")  
**5600 SERIES**  
 DUAL ROW HEADER  
 WITH LATCH EJECT



2.00mm (079")  
**5610 SERIES**  
 BOX HEADER NO EJECT



2.00mm (.079")  
**5615 SMT SERIES**  
BOX HEADER NO EJECT SMT TYPE



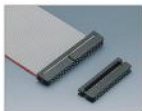
2.00mm (.079")  
**5700 SERIES**  
MIN JUMPER



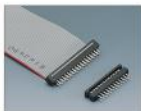
2.00mm (.079")  
**5800 SERIES**  
P.C.B. MOUNTING



2.00mm (.079")  
**5805 SMT SERIES**  
P.C.B. MOUNTING SMT TYPE



2.00mm (.079")  
**5900 SERIES**  
I.D.C. SOCKET



2.00mm (.079")  
**5910 SERIES**  
DIP PLUG



1.27mm (.050")  
**6100 SERIES**  
SINGLE ROW HEADER  
1.27mm x 2.54mm (.050" x .100")

**6200 SERIES**  
DUAL ROW HEADER



1.27mm (.050")  
**6105 SMT SERIES**  
SINGLE ROW HEADER SMT TYPE  
1.27mm x 2.54mm (.050" x .100")

**6205 SERIES**  
DUAL ROW HEADER SMT TYPE



1.50mm (.049")  
**6400 SERIES** HOUSING  
**6401 SERIES** WAFER  
**6403 SERIES** TERMINAL



1.25mm (.049")  
**6500 SERIES** HOUSING  
**6501 SERIES** WAFER  
**6503 SERIES** TERMINAL



1.25mm (.049")  
**6510 SERIES** HOUSING  
**6511 SERIES** WAFER  
**6513 SERIES** TERMINAL



1.25mm (.049")  
**6530 SERIES** HOUSING  
**6531 SERIES** WAFER  
**6533 SERIES** TERMINAL



1.25mm (.049")  
**6540 SERIES** HOUSING  
**6541 SERIES** WAFER  
**6543 SERIES** TERMINAL



1.25mm (.049")  
**6560 SERIES** HOUSING  
**6561 SERIES** WAFER  
**6563 SERIES** TERMINAL



1.27mm x 2.54mm (.050" x .100")  
**6600 SERIES**  
DUAL ROW HEADER  
WITH LATCH EJECT



1.27mm x 2.54mm (.050" x .100")  
**6610 SERIES**  
BOX HEADER NO EJECT



1.27mm x 2.54mm (.050" x .100")  
**6620 SERIES**  
 P.C.B. MOUNTING



1.27mm x 1.27mm (.050" x .050")  
**6710 SERIES**  
 BOX HEADER NO EJECT



1.27mm x 1.27mm (.050" x .050")  
**6715 SMT SERIES**  
 BOX HEADER NO EJECT SMT TYPE



1.27mm x 2.54mm (.050" x .100")  
**6800 SERIES**  
 P.C.B. MOUNTING



1.27mm (.050")  
**6810 SERIES**  
 P.C.B. MOUNTING  
 1.27mm x 1.27mm (.050" x .050")



1.27mm x 1.27mm (.050" x .050")  
**6815 SMT SERIES**  
 P.C.B. MOUNTING SMT TYPE



1.25mm (.049")  
**6820 SERIES**  
 FPC/FPC CONNECTOR



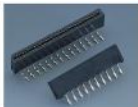
0.50mm (.020")  
**6823 SMT SERIES**  
 FPC/FPC CONNECTOR SMT TYPE



**6811 SERIES**  
 DUAL ROW P.C.B. MOUNTING



1.00mm (.039")  
**6826D SMT SERIES**  
 FPC/FPC CONNECTOR SMT TYPE



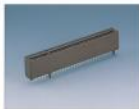
1.00mm (.039")  
**6827 SERIES**  
 FPC/FPC CONNECTOR



1.00mm (.039")  
**6828 SMT SERIES**  
 FPC/FPC NON-ZIF CONNECTOR SMT TYPE



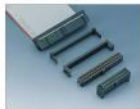
1.00mm (.039")  
**6829 SERIES**  
 FPC/FPC CONNECTOR



1.27mm (.050")  
**6830 SERIES**  
 CARD EDGE SLOT



0.80mm (.031")  
**6831 SERIES**  
 FPC/FPC CONNECTOR SMT TYPE



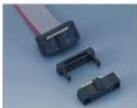
1.27mm x 2.54mm (.050" x .100")  
**6900 SERIES**  
 I.C. SOCKET  
**6901 SERIES**  
 I.C. SOCKET WITH STRAIN RELIEF



1.27mm x 2.0mm (.050" x .079")

**6910 SERIES**

DIP PLUG



1.27mm x 1.27mm (.050" x .050")

**6920 SERIES**

I.D.C. SOCKET



**7000 SERIES**

CENTRONIC I.D.C. TYPE



**7100 SERIES**

CENTRONIC P.C.B. TYPE



**7200 SERIES**

CENTRONIC SOLDER TYPE



**7300 SERIES**

D-SUB SOLDER TYPE

**7310 SERIES**

H.D. D-SUB SOLDER TYPE



**7300 C SERIES**

PLASTIC COVER

METAL COVER

DIE CAST COVER



**7400 SERIES**

D-SUB P.C.B. TYPE

**7410 SERIES**

H.D. D-SUB P.C.B. TYPE



**7500 SERIES**

D-SUB P.C.B. TYPE

**7510 SERIES**

H.D. D-SUB P.C.B. TYPE



**7600 SERIES**

D-SUB I.D.C. TYPE



**7700 SERIES**

D-SUB HOUSING

**7703 SERIES**

D-SUB TERMINAL



**7710 SERIES**

H.D. D-SUB HOUSING

**7713 SERIES**

H.D. D-SUB TERMINAL



1.00mm (.039")

**8400 SERIES** HOUSING

**8401 SERIES** WAFER

**8403 SERIES** TERMINAL



1.00mm (.039")

**8410 SERIES** HOUSING

**8411 SERIES** WAFER

**8413 SERIES** TERMINAL

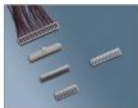


1.50mm (.039")

**8430 SERIES** HOUSING

**8431 SERIES** WAFER

**8433 SERIES** TERMINAL



0.80mm (.031")

**9100 SERIES**



1.50mm(.020")  
**0500 SERIES HOUSING**  
**0503 SERIES TERMINAL**



1.27mm(.050")  
**MICRO-MATCH ASSEMBLIES**



3.5mm(.138")  
**TERMINAL BLOCK**



5.0mm(.197")  
**TERMINAL BLOCK ASSEMBLIES**



**9000 SERIES**  
**GENDER CHANGER**



**H2430-05PD01**  
 USB BF/2430-05P



**H2430-05PD02**  
 USB AF/2430-05P



**MD9M-USBAM-MD6F-D6F**  
 MINI DIN 9 MALE+ USB A MALE  
 MINI DIN 6 FEMALEx2+ DIN 6 FEMALE



**IEEE 1394 CONNECTOR**  
 DIP TYPE



**IEEE 1394 CONNECTOR**  
 SMT TYPE



**DVI MALE CONNECTOR**  
 DIP TYPE



**DVI FEMALE CONNECTOR**  
 DIP TYPE



**USB A TYPE CONNECTOR**



**USB B TYPE CONNECTOR**



**MINI USB CONNECTOR**



**F.P.C. CONNECTORS SERIES**  
**FLEXIBLE FLAT CABLE SERIES**



杉洋企業有限公司  
SUNNY YOUNG ENTERPRISE CO., LTD.

新北市汐止區南陽街276號  
No. 276, Nan Yang St., Xizhi Dist.,  
New Taipei City 22154, Taiwan (R.O.C.)

Tel: 886-2-2694-5995-9

Fax: 886-2-2694-3721

<http://www.sunmyoung.com.tw>

E-mail: [sye@sunmyoung.com.tw](mailto:sye@sunmyoung.com.tw)

